



178 Marathon House, wembley park, HA9 0GE
£700,000





178 Marathon House, wembley park, HA9 0GE

£700,000

Modern Apartment in Prime Wembley Park Location | Gym | Concierge | Underground Parking.

This newly listed apartment is set within a professionally managed development just a 5-minute walk from Wembley Park Station, offering easy access to Central London via the Jubilee and Metropolitan lines. Finished to a high standard and in good condition throughout.

Additional features include:
Allocated underground parking
Concierge service & residents gym
Ample storage space

Close proximity to supermarkets and everyday amenities
Don't miss this opportunity to live in one of Wembley Park's most convenient and sought-after developments.

Enquire today to arrange a viewing.

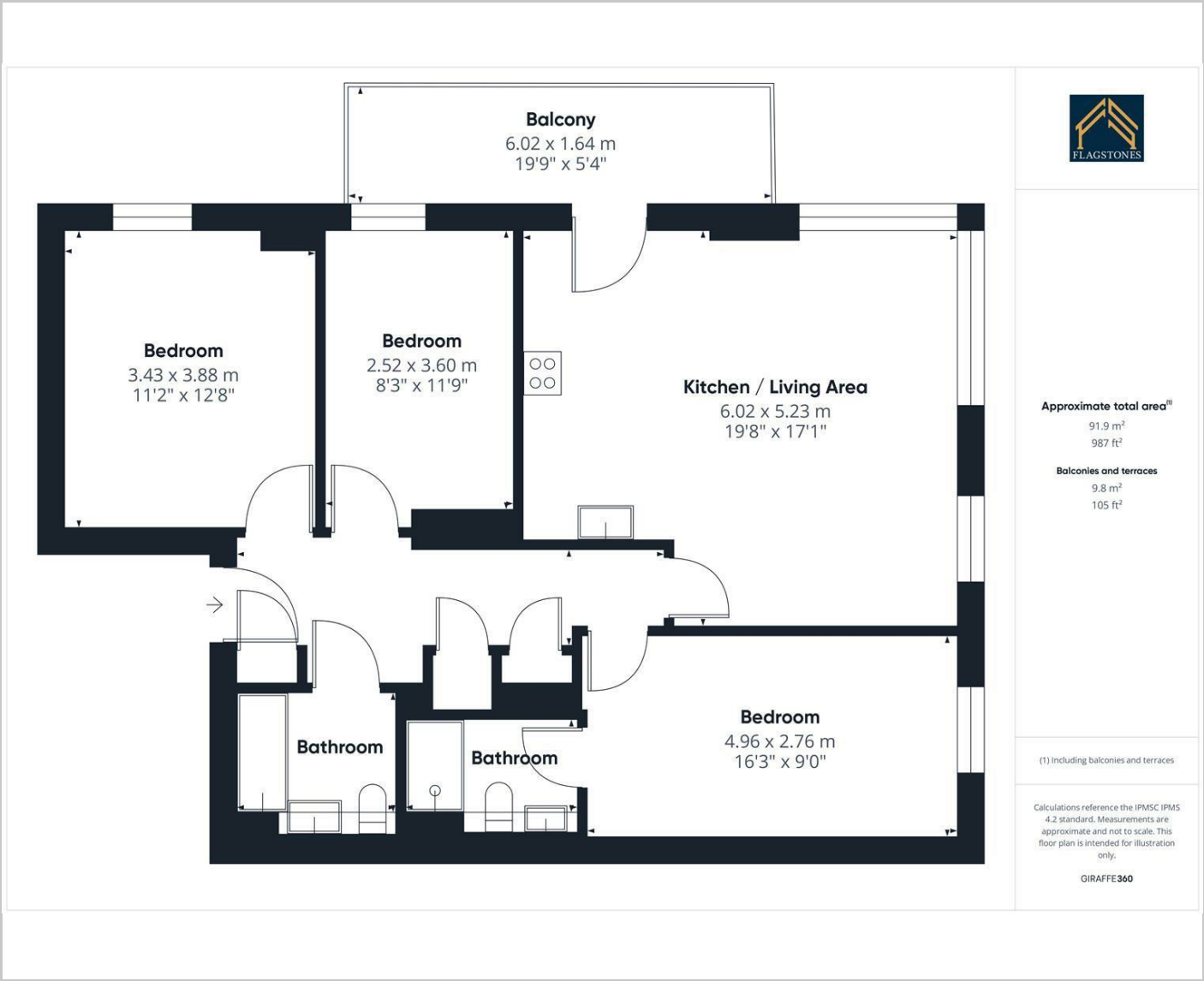
Description

Situation

null
Council Tax Band: B
Available:



Floor Plans



Area Map



Energy Performance Graph



These particulars, whilst believed to be accurate are set out as a general outline only for guidance and do not constitute any part of an offer or contract. Intending purchasers should not rely on them as statements of representation of fact, but must satisfy themselves by inspection or otherwise as to their accuracy. No person in this firms employment has the authority to make or give any representation or warranty in respect of the property.